

1. SCOPE 应用范围

This specification is applied to SHANGHAI HITACHI rotary compressor.
此规格适用于上海日立电器有限公司生产的旋转式压缩机。

2. SPECIFICATION OF COMPRESSOR 压缩机规格

2.1 Model

型号	ASH218RN-C8LU
----	---------------

2.2 Rated Voltage-Frequency-Phase

额定电压/频率/相数	208~230V/60Hz/单相
------------	------------------

2.3 Application

应用	Air Conditioning 空调机
----	-------------------------

2.4 Refrigerant

制冷剂	R—410A
-----	--------

2.5 Compressor Cooling

压缩机冷却	Forced air 强制空冷
-------	--------------------

2.6 Displacement

排气量	21.8ml/rev
-----	------------

2.7 Rated capacity(see*)

额定冷量 (见*)	CHEER 7720/7750W(at208/230V)	ASHRAE 6180/6270W(at208/230V)
-----------	---------------------------------	----------------------------------

2.8 Motor input(see*)

电机输入功率(见*)	1480/1500W(at208/230V)	2210/2180W(at208/230V)
------------	------------------------	------------------------

2.9 COP

能效比	5.29/5.17	2.80 /2.88
-----	-----------	------------

2.10 Current

电流	7.1/6.8A(at208/230V)	10.7/9.7A(at208/230V)
----	----------------------	-----------------------

2.11 Allowable amount of

refrigerant charge

制冷剂充注允许量	2100 g
----------	--------

2.12 Amount of oil charge

油充注允许量	600±20 ml(Initial) 600±20 ml(最初)
--------	-------------------------------------

2.13 Oil

油	68HES-H or equivalent
---	-----------------------

2.14 Space volume of inner case

壳体内容积	1780ml
-------	--------

2.15 Net weight

净重	17.9kg incl.oil 17.9kg 包括油
----	-------------------------------

SUBJECT		PAGE : 2/23	
Model ASH218RN-C8LU SPECIFICATION ASH218RN-C8LU 规格书			
2.16 Hermetic Terminal 密封接线柱	1/4"quick connect type 1/4" 快速连接型		
2.17 Motor			
Type	Permanent Split Capacitor		
Capacitor	35 μ F/400 Volts		
Locked rotor amps	56A (230V/60Hz)		
Approved voltage range	Rated voltage \pm 10%		
Winding resistance(M/S)	1.43/2.71 (at 75)		
电机			
形式	PSC		
电容器	35 μ F/400V		
堵转电流	56 A(230V/60Hz)		
电压变动范围	额定电压 \pm 10%		
电阻(主线圈/副线圈)	1.43/2.71 (at 75)		
2.18 Rated conditions		CHEER	ASHRAE
	Voltage	208V ~ 230V	208V ~ 230V
	Evaporating temp.	7.2	7.2
	Condensing temp.	37.8	54.4
	Liquid temp. entering expansion valve.	29.4	46.1
	Return gas temp.	18.3	35
	Ambient temp.	35.0	35.0
额定工况	电压	208V ~ 230V	208V ~ 230V
	蒸发温度	7.2	7.2
	冷凝温度	37.8	54.4
	膨胀阀前液体温度	29.4	46.1
	回气温度	18.3	35
	周围温度	35.0	35.0
2.19 Starting performance	(1) The starting voltage should be as follows. (2) The starting pressure should be balanced between the suction and discharge of the compressor and should be adjusted to the following table. (3) The temperatures of the compressor enclosure should be more than 20 continuously at the following table.		
起动性能	(1) 起动电压如表 1 所示。 (2) 起动压力必须在吸气压力及排气压力之间进行平衡，并按下表予以调节。 (3) 在起动工况下，压缩机环境温度要保持在 20 以上。		

TABLE 1 表 1

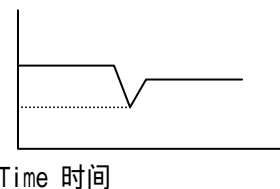
Starting Conditions 起动工况		Spec 规格
Motor temperature 电机状态	Pressure 平衡压力 MPa{kgf/cm ² G}	Starting voltage 起动电压 (V ₂)**
Cold-Starting 冷起动 Cold state (room temperature) 冷工况(室温)	1.782{17.16}	Below 85% of rated voltage 不高 于额定电压的 85%
Hot-Starting(Standard) 热起动(标准) Hot state after operated under standard load condition 在标准负载下运行后的工况	1.706{16.36}	Below 85% of rated voltage 不高 于额定电压的 85%
Hot-starting(Overload) 热起动(超负荷) Hot state after operated under overload condition 在超负载条件下运行后的工况	1.860{17.96}	Below 95% of rated voltage 不高 于额定电压的 95%

*. Rated capacity and motor input are measured by secondary Refrigerant calorimeter Methods of JIS B8606 by Shanghai Hitachi Electrical Appliances Co., Ltd. Allowable capacity should be more than 95% of the rated capacity and Allowable motor input should be less than 107% of rated motor input.
额定冷量和电机输入功率由本公司根据 JIS B8606 的第二制冷剂法测试。允许冷量应为额定冷量的 95% 以上，允许电机输入功率应为额定电机输入功率的 107% 以下。

** . V₂ means minimum voltage measured between pins of hermetic terminal at the compressor starts.

V₂ 是指压缩机起动时所测密封接线柱端子间的最小电压。

V₂



Time 时间

***. The suction pressure is measured on the position above the filter of accumulator.
吸入压力测定位置在储液器滤网上面。

SUBJECT

Model ASH218RN-C8LU SPECIFICATION
ASH218RN-C8LU 规格书

PAGE : 4/23

3. PARTS AND DRAWING LIST 零件及图纸清单

PARTS NAME 零件名称		QTY/SET 数量/套	DRAWING NO. 图纸号	REMARKS 备注
Compressor 压缩机		1	4CYCH0102	Dimensioned sketch 尺寸简图
Mounting parts 安装件	RUBBER GROMMET 避振脚	3	4CYC00008	
	Bolt 固定螺栓	-	4CYC00175	*
	Nut 固定螺母	-	(M8)	*
Electrical parts 电器部件	OTerminal-Cover 接线盒盖	1	4CYC00101	
	Gasket 接线盒盖垫片	1	4CYC00102	
	Nut 固定螺母	1	3CYC00004	
	Rubber-Washer 固定垫圈	1	4CYC00174	
	Running Capacitor 运转电容	-	4CYC00173	*
			4CYC00737	Wiring Diagram 接线图 Performance curve 性能曲线

* Out of supply, for reference. 不提供, 仅供参考。

4. CHARACTERISTICS 一般特性

4.1 Residual moisture 150mg MAX

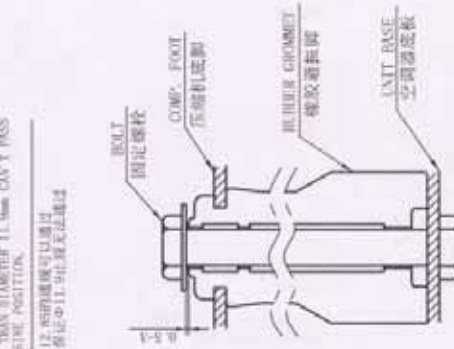
残余水分含量 以下

4.2 Residual impurities 100mg MAX

杂质含量 以下

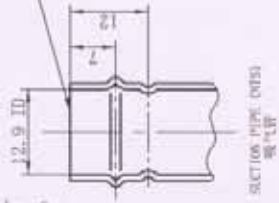
记号	来源	年月日	订正	序号	履历	年月日	订正
①	新设计	07.03.20	徐时培	①			
②	修改	08.03.01	徐时培	②			
③				③			

THE COLUMN WHICH LESS THAN DIAMETER 12.85mm CAN PASS THE PIPE, BUT THE COLUMN WHICH MORE THAN DIAMETER 11.9mm CAN'T PASS THE PROTECTIVE POSITION.
 内径小于φ12.85的螺栓可以通过管座孔而直径大于φ11.9的螺栓无法通过

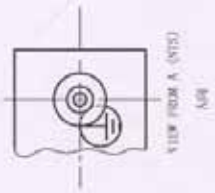


RUBBER GROMMET STRUCTURE
 橡胶密封垫结构
 具体外形以实物为准
 THE CONCRETE APPEARANCE IS SUBJECT TO MATERIAL DEFECT

DIMENSION: mm
 尺寸单位: mm

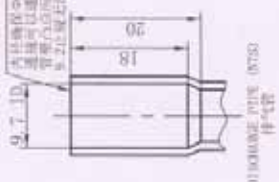


SECTION PIPE (NTS)
 吸气管



VIEW FROM A (NTS)
 A/A

THE COLUMN WHICH LESS THAN DIAMETER 9.7mm CAN PASS THE PIN, BUT THE COLUMN WHICH MORE THAN DIAMETER 9.7mm CAN'T PASS THE PROTECTIVE POSITION.
 直径小于φ9.7mm的螺栓可以通过管座孔而直径大于φ9.7mm的螺栓无法通过



DISCHARGE PIPE (NTS)
 排气管

THE ACCUMULATOR APPEARANCE IS SUBJECT TO MATERIAL DEFECT
 储液器外表以实物为准

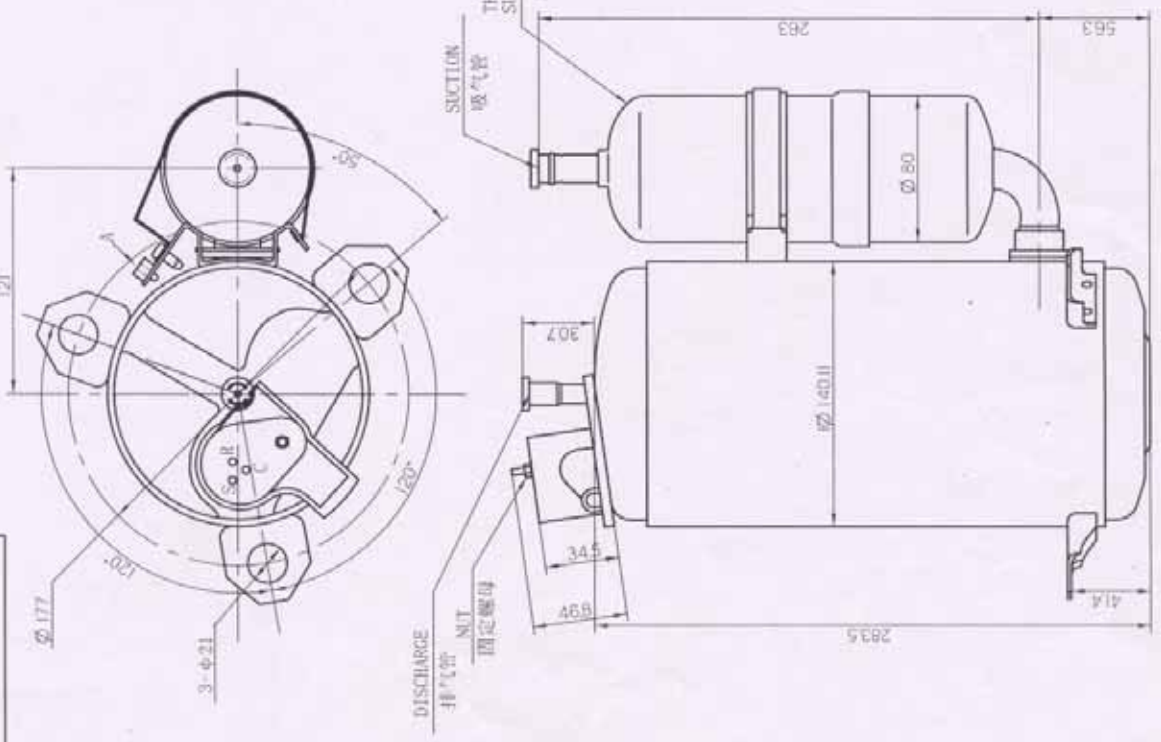
NOTE:

1. THE TORQUE ENFORCED ON THE NUT IS 1.5±0.3N.m
 接线盒固定螺母的安装扭矩为 1.5±0.3N.m.
2. PUTTING OUT RUBBER PLUG WHEN FIXING EARTH PARTS.
 接地线孔橡胶塞拔去后, 安装接地附件。

适用机构
 ASH201SN-C8LU ASH215SN-C8LU

ASH201SN-C8LU	ASH215SN-C8LU
①	①

B 104号标准
 4CYCH0102



REGD	REV	DATE	BY	CHKD	DATE	BY	CHKD	DATE	BY
	01	07.03.20	徐时培	02	08.03.01	徐时培	03	08.03.01	徐时培

REL. MARKS	PROJECTION	SCALE	TITLE
	①	NTS	4CYCH0102

4CYCH0102

